



MEET  
THE NEW  
CREATIVITY

**800X1600MM**



800X  
1600MM

MATT



# SIGNIFICANT

Enlighten your space with the most significant  
style of our collection.



**MARBLE TOUCH**  
next level slab



## **BERLINGTON GREY COL**

RANDOM

800X  
1600MM | **MATT**



> **Prestige**  
Banquet Halls



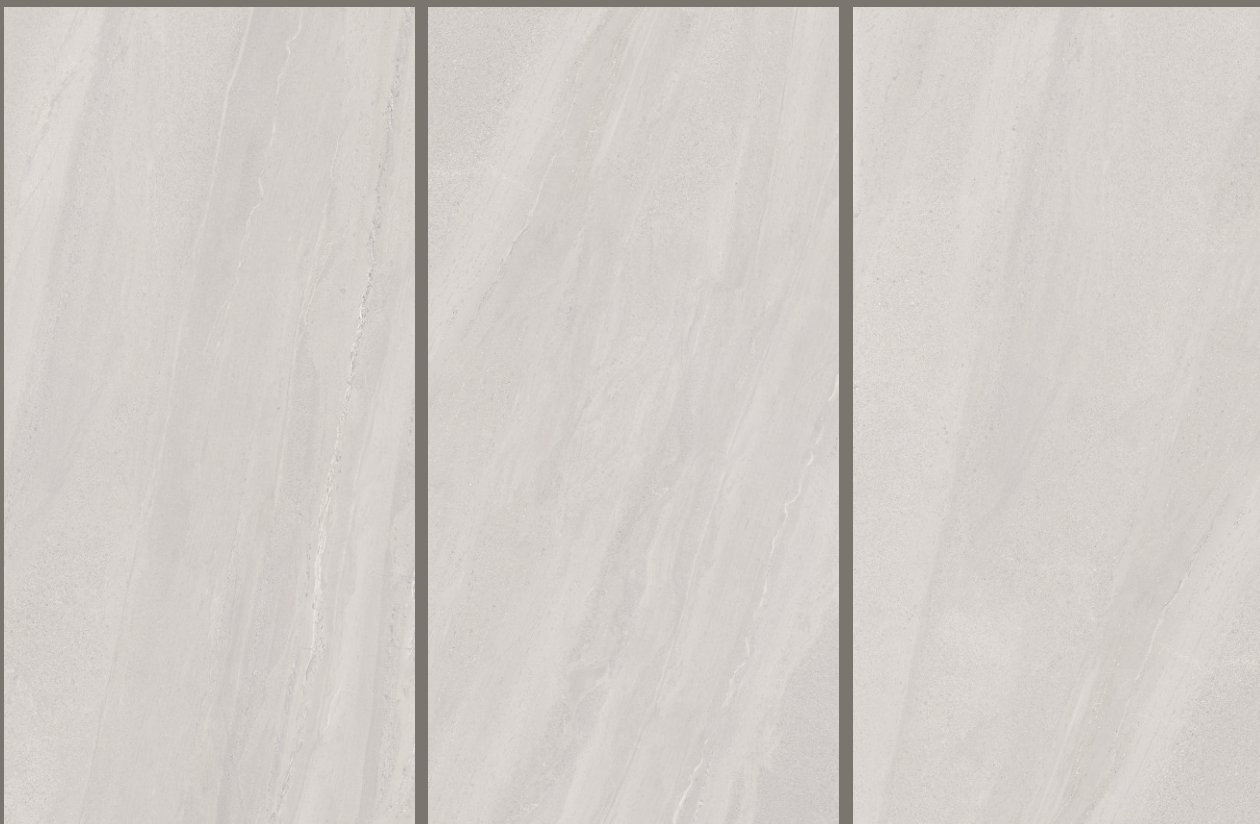
## **BERLINGTON NERO COL**

RANDOM

800X  
1600MM | **MATT**



**MARBLE TOUCH**  
next level slab



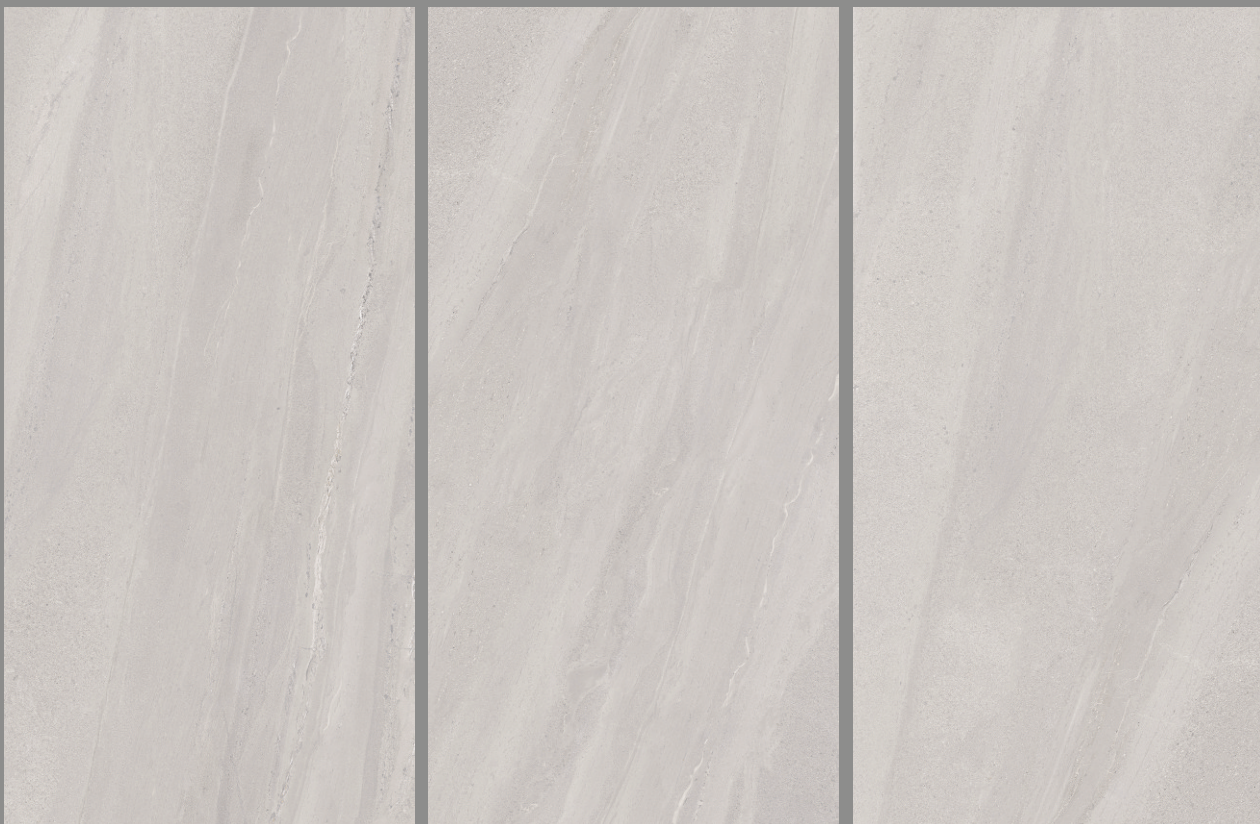
## BERLINGTON SILVER COL

RANDOM

800X  
1600MM | **MATT**



> **Prestige**  
Banquet Halls



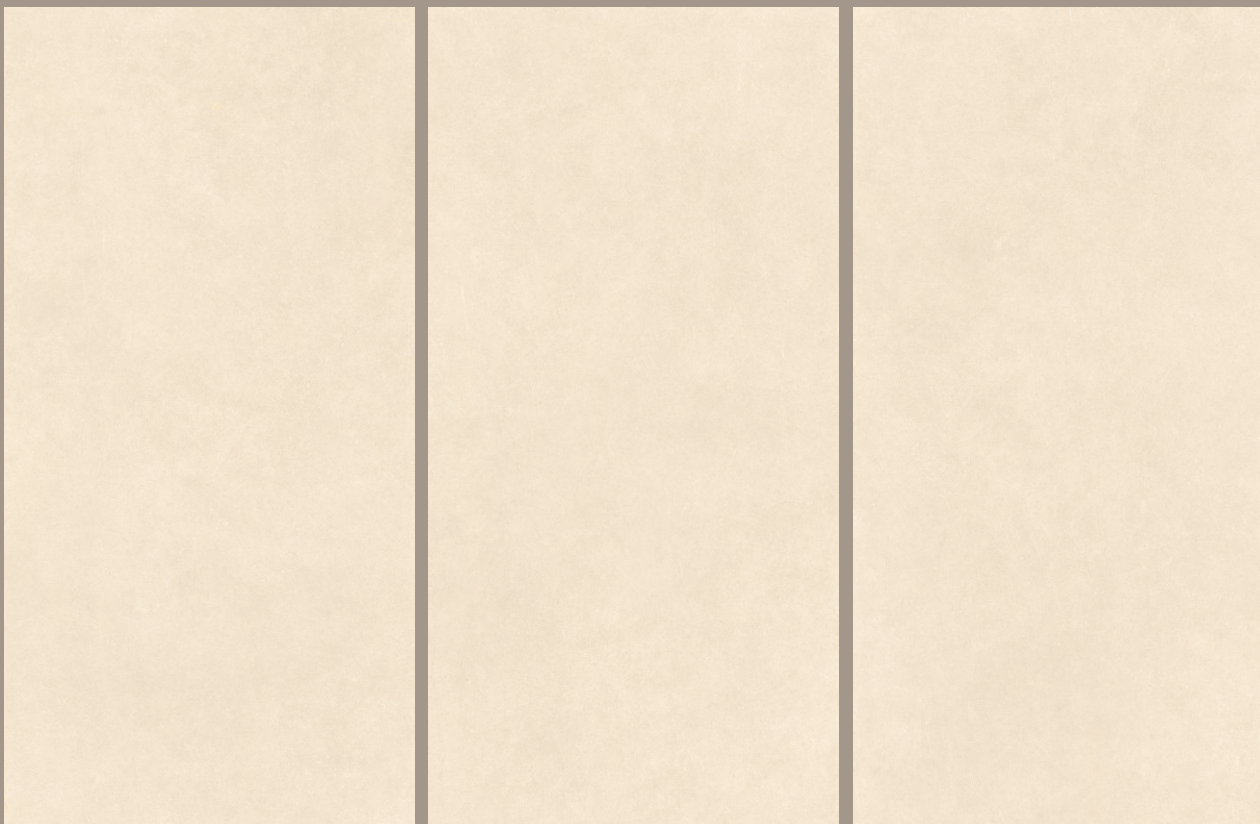
**BERLINGTON  
SMOKE COL**

RANDOM

800X  
1600MM | **MATT**



**MARBLE TOUCH**  
next level slab



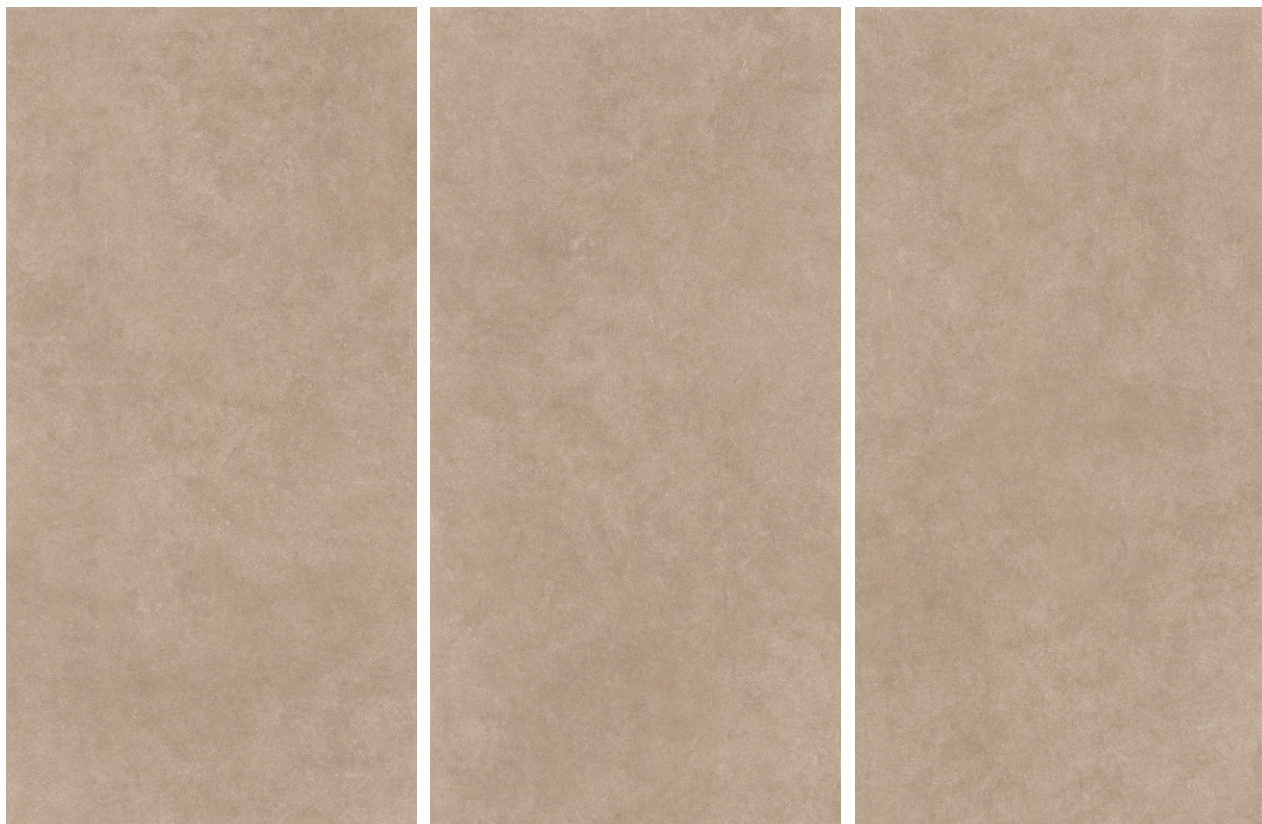
## MAGNIFICA BEIGE

RANDOM

800X  
1600MM | **MATT**



> **Prestige**  
Banquet Halls



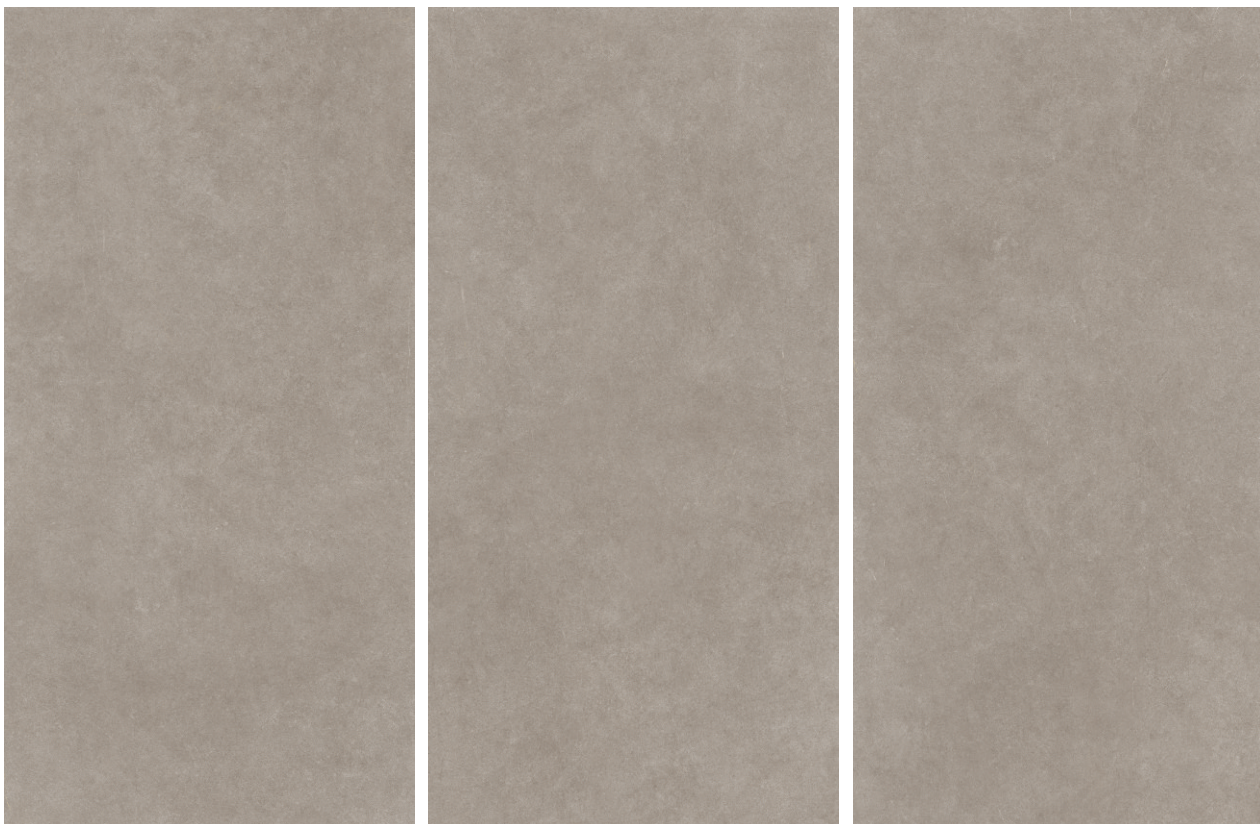
## MAGNIFICA BROWN

RANDOM

800X  
1600MM | **MATT**



**MARBLE TOUCH**  
next level slab



## MAGNIFICA GRIS

RANDOM

800X  
1600MM | **MATT**



> **Prestige**  
Banquet Halls



**MAGNIFICA  
SILVER**

RANDOM



## TECHNICAL SPECIFICATION

CHARACTERISTIC	STANDARD AS PER ISO-13006/EN14411 GROUP Bla	VALUE	TEST METHOD
<b>REGULATORY PROPERTIES</b>			
Deviation in length & width	±0.5 %	±0.1 %	ISO-10545-2
Deviation in thickness	±5.0 %	±4.0 %	ISO-10545-2
Straightness in side	±0.5 %	±0.1 %	ISO-10545-2
Rectangularity	±0.5 %	±0.1 %	ISO-10545-2
Surface flatness	±0.5 %	±0.2 %	ISO-10545-2
Color difference	Unaltered	No change	ISO-10545-16
Glossiness	As per mfg	Min 90%	GLOSSOMETER
<b>STRUCTURAL PROPERTIES</b>			
Water absorption	< 0.50 %	< 0.05 %	ISO-10545-3
Apparent density	> 2.0 g/cc	> 2.10 g/cc	DIN 51082
<b>MASSIVE MECHANICAL PROPERTIES</b>			
Modulus of rupture	Min. 35 N/mm <sup>2</sup>	Min. 40 N/mm <sup>2</sup>	ISO-10545-4
Breaking strength	Min. 1300 N	Min. 2000 N	ISO-10545-4
Impact resistance	As per mfg.	Min. 0.55	ISO-10545-5
<b>SURFACE MECHANICAL PROPERTIES</b>			
Surface abrasion resistance	As per mfg	Min. Class-3	ISO-10545-7
MOH's hardness	As per mfg	Min. 4	EN 101
<b>THERMO HYGROMETRIC PROPERTIES</b>			
Frost resistance	No damage	No damage	ISO-10545-12
Thermal shock resistance	No damage	No damage	ISO-10545-9
Moisture expansion	Nil	Nil	ISO-10545-10
Thermal expansion (COE)	Max. 9.0 x 10 <sup>-6</sup>	Max. 6.5 x 10 <sup>-6</sup>	ISO-10545-8
Crazing resistance	As per mfg	Min. 10 Cycle	ISO-10545-11
<b>CHEMICAL PROPERTIES</b>			
Chemical resistance	No damage	No damage	ISO-10545-13
Stain resistance	Resistant	Resistant	SO-10545-14
<b>SAFETY PROPERTIES</b>			
Slip resistance	As per mfg	> 0.40	ISO-10545-17
Fire resistance	As per mfg	Fireproof	N. A.
Lead & Cadmium given off by glazed tiles	As per mfg	Does not yield Pb & Cd	ISO-10545-15

## PACKING DETAILS

Size	Tiles / Box	Coverage Area / Box (approx.)	Coverage Area / Box (approx.)
80X160CM	2 pcs	2.56 Sq. m.	27.55 Sq. ft.

Note: Colour Shown are as accurate as the limitations of the printing process will allow. Prospective customers are advised to inspect a sample of the tile before ordering. Every effort has been made to ensure the accuracy of the information given. However, the company reserve the right to change the specifications without prior notice. Sometime variations in shade or size being inherent to ceramic industry may occur. Before fixing, we advise you to follow the fixing instructions on the cartons of the tiles as no responsibility can be accepted by the company once the tiles have been fixed.